

PRODUCT FEATURES

VENTRA is a multi louvred ventilator that provides an economic, nonpowered method of ventilation, allowing the removal of large quantities of warm air and / or smoke from a building within a short period of time. The Ventra is suitable for air feed (facade), air extraction (facade and roof) and natural lighting. The vents are manufactured according to ISO 9001 quality control standards. The vents are formed from high quality corrosion resistant aluminium to ensure low maintenance requirements and watertightness. Various methods of operation using pneumatic or electric actuators are available. The ventilator design produces a versatile economic unit suitable for a wide range of applications. Available on large dimensions, up to 2400 x 3826 mm (width x length).





Ventra

TYPICAL APPLICATIONS

Versatile scope of applications on roofs and facades, with an installation angle range from 0° to 90°. Installations: Industrial buildings, warehouses, logistics centres, shopping centres, atria, etc..

MATERIALS

Aluminium; tempered, sea water and corrosion-resistant AlMg3 and extruded aluminium profiles for the frames. Corrosion-resistant bearings. The aluminium is supplied untreated as standard. Free of silicones.

DIMENSIONS

Roof opening width W: 300 - 2400 mm
Roof opening length L: 746 - 3826 mm (17 louvres, max.)

OPENING ANGLE

Individual adjustable from 0° up to 90°

CONTROLS NATURAL VENTILATION

P - Single pipe compressed operation
P2 - Double pipe compressed air operation
M230V Electric motor

CONTROLS FIRE VENTILATION

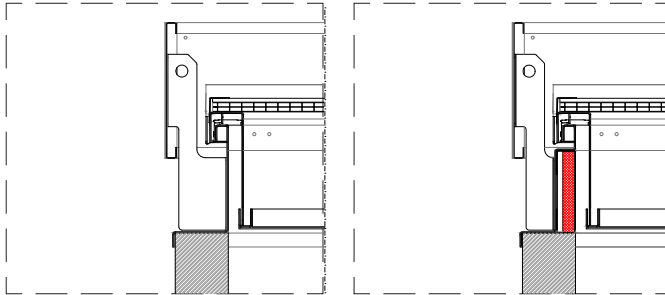
PF - Single pipe compressed air operation with fire function
P2F - Double pipe compressed air operation with fire function
M24V Electric motor

LOUVRES

- AL** Single aluminium
- AL ISO** Double insulated aluminium
- PC16** Polycarbonate 16mm, clear or opal
- PC25** Polycarbonate 25mm, clear or opal
- GLASS** Single or double glass

BASES

- Single aluminium
- Double insulated aluminium



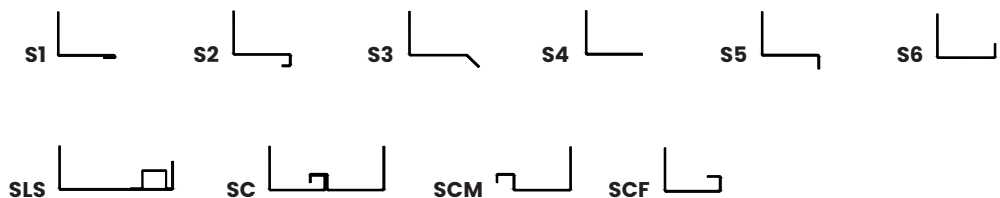
DETAIL 01
single aluminium

DETAIL 02
double insulated aluminium

FLANGES

- S1** Flange for single glass
- S2** Flange for double glass
- S3** Flange for roofs, 45° bended
- S4** Flange for roofs and facades
- S5** Flange for upstand, 90° bended downwards
- S6** Flange 90° bended upwards
- SLS** Flange for skylight connection, for different polycarbonate thicknesses
- SC** Flange for connection with other flange (vents connection). Male or female connection.
- SCM** Flange for male connection
- SCF** Flange for female connection

* Custom flange design and insulated flanges upon request



DIMENSIONS/LOUVRES TABLE

NUMBER OF LOUVRES															
	3	4	5	6	7	8	9	10	11	12	13	14	15	16	17
WIDTH (MM)	LENGTH (MM)														
300															
600															
1000															
...	746	966	1186	1406	1626	1846	2066	2286	2506	2726	2946	3166	3386	3606	3826
1800															
2000															
2400															

WEIGHT

Depends on dimensions and type of infill

OPTIONS

Custom dimensions / Powder-coated design (any RAL colour) / Bird or insect mesh/Anti-fall grid 1200 J.

REGULATIONS

The system has been tested and is certified in accordance with EN 12101-2

