



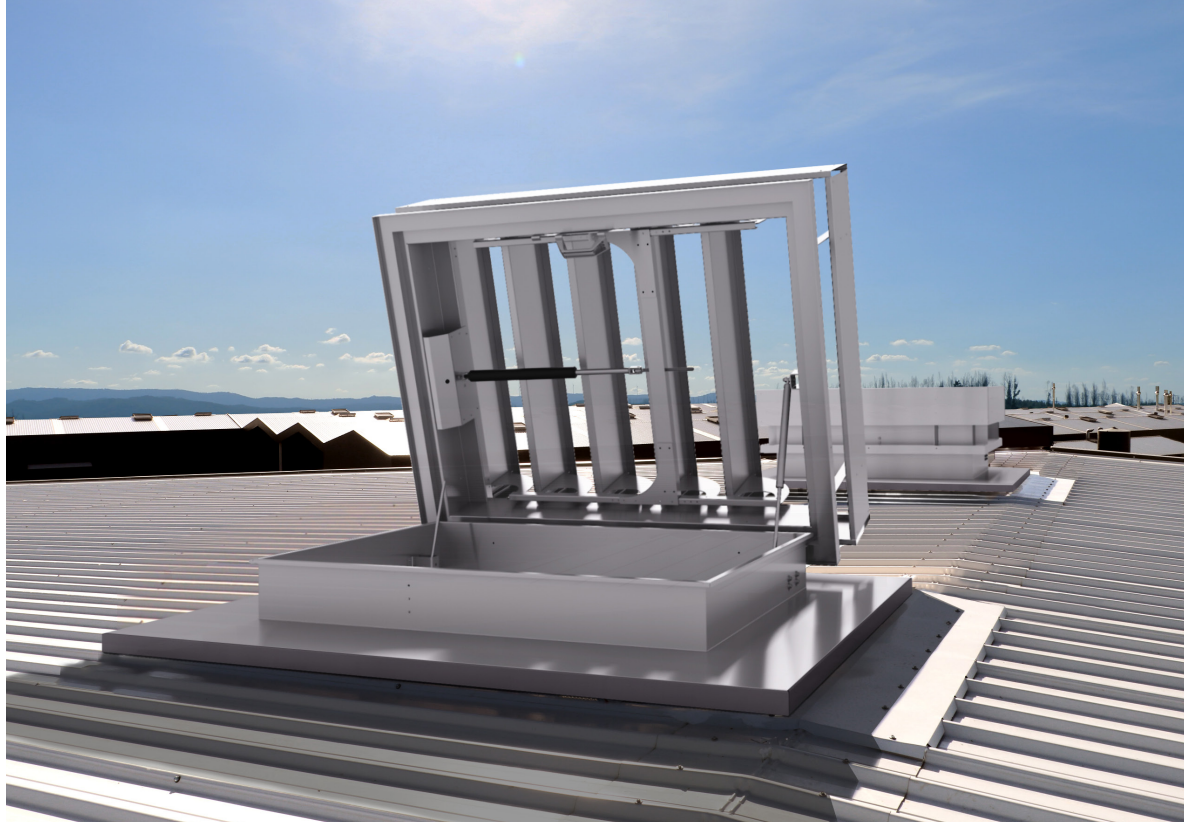
PRODUCT FEATURES

VENTRA RA is a combination of the multi louvred ventilator type VENTRA with a hinging base adaptor for roof access.

This solution meets the need for a EN12101-2 certified natural smoke exhaust ventilator that is also suitable as a roof entry hatch. The base adaptor is formed from high quality corrosion resistant aluminium and is available with single wall or double wall insulated base.

Sideways opening can be either manual with gas springs or with electric motors. The VENTRA as opening lid is available with various louvre- and base options and has standard a 24Vdc motor for daily ventilation and smoke exhaust.





TYPICAL APPLICATIONS

To be installed on the roof, standard provided with a S5 flange type for fixing onto an upstand. Other flange options possible on request.

MATERIALS

Aluminium; tempered, sea water and corrosion-resistant AlMg3 and extruded aluminium profiles for the frames.
The aluminium is supplied untreated as standard. Free of silicones.

DIMENSIONS

roof opening width 900 – 1800 mm
roof opening length 966 – 2506 (11 Louvres, max)
Some configuration need to be evaluated due louvres materials.
Consult technical department.

OPENING ANGLE

Ventra individual adjustable from 0° up to 90°
Access roof hatch opening up to 90°

CONTROLS

Opening sideways for roof access manually with gas springs and handle with internal lock, or 24Vdc electric.

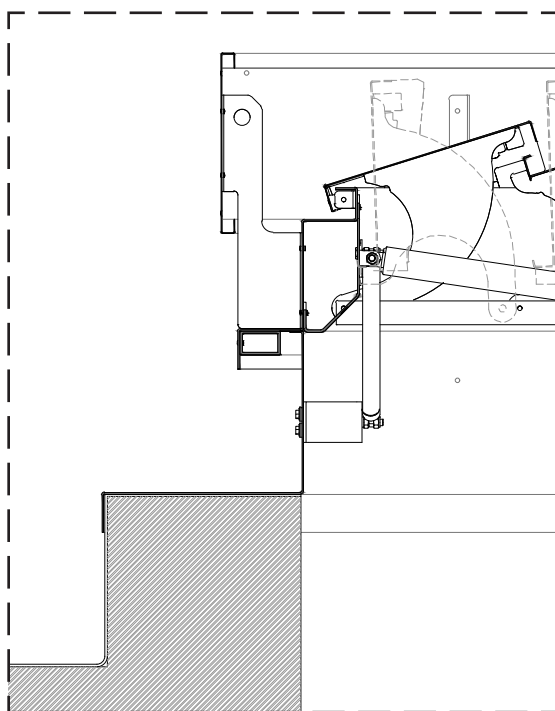
Operation VENTRA for day to day ventilation and smoke exhaust ventilation 24Vdc electric.

LOUVRES

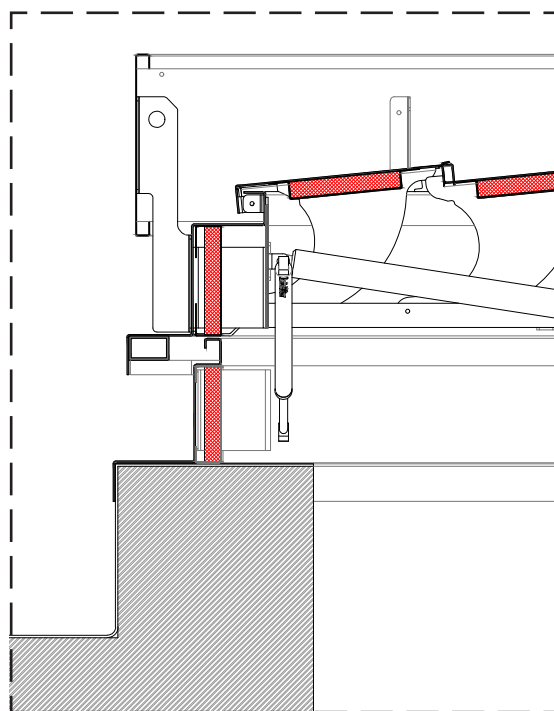
| | |
|---------------|------------------------------------|
| AL | Single wall aluminium |
| AL ISO | Double wall aluminium insulated |
| PC16 | Polycarbonate 16 mm, clear or opal |
| PC25 | Polycarbonate 25 mm, clear or opal |

BASES

Single wall or double wall insulated



DETAIL 01
single wal



FLANGES

| | |
|-----------|--------------|
| S5 | Hinging base |
|-----------|--------------|

* Custom flange design and insulated flanges upon request

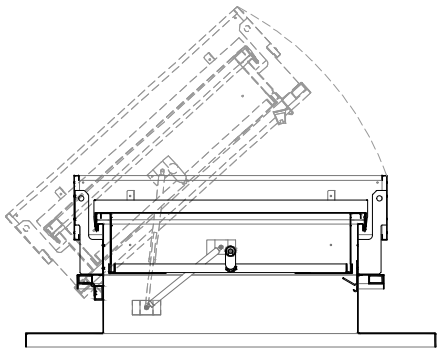


WEIGHT

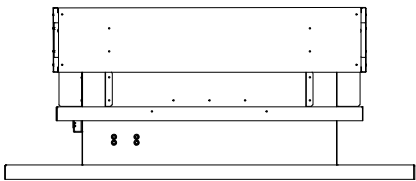
Depends on dimensions and type of infill

OPTIONS

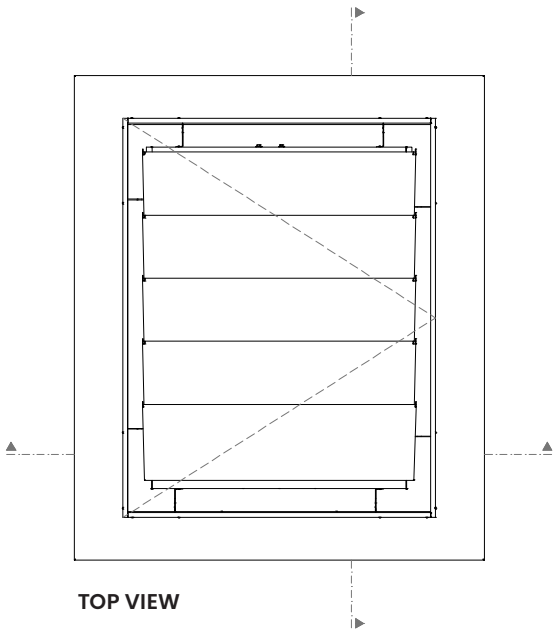
Polyester powder coating



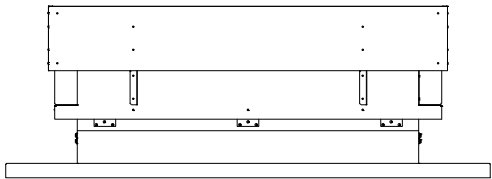
SECTION S2



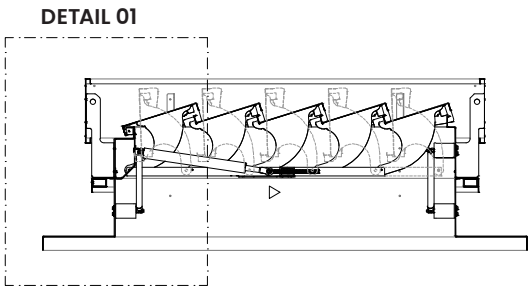
FRONT VIEW



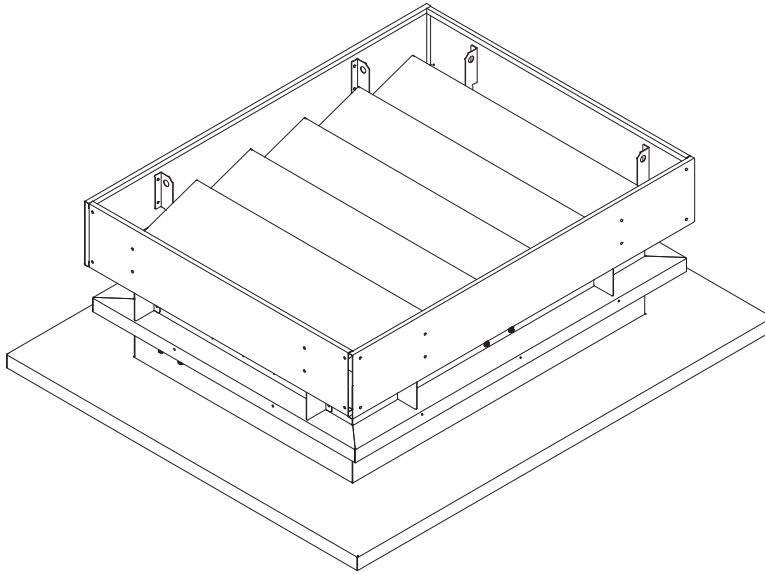
TOP VIEW



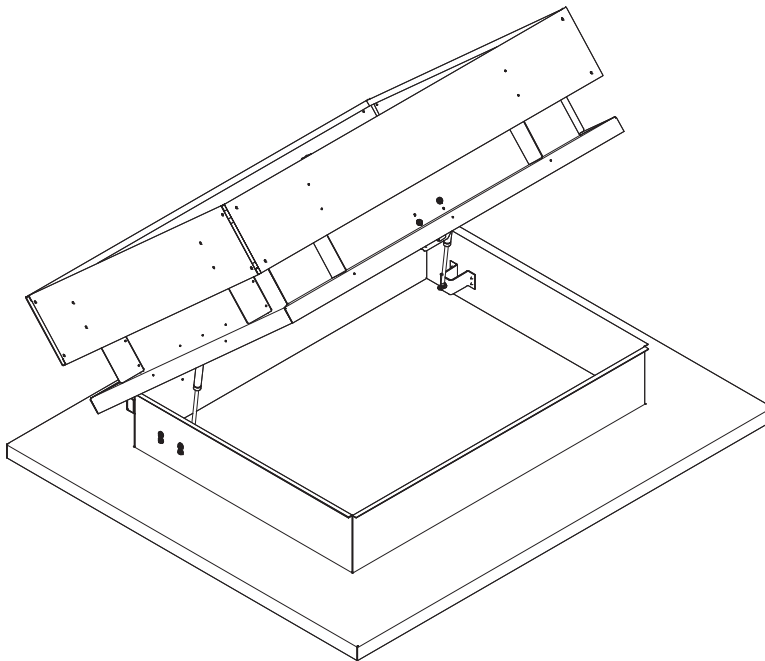
SIDE VIEW



SECTION S1



VENTRA RA - CLOSED PERSPECTIVE



VENTRA RA - OPEN PERSPECTIVE